

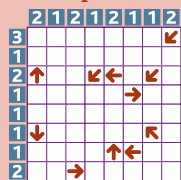
Shinro

How to

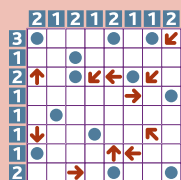
Shinro is Japanese for "compass bearing."

Each grid here contains 12 holes for you to locate in the empty spaces. The number of holes in each row and column is indicated by the corresponding number beside the grid. In addition, each arrow points directly toward one or more of these holes. An arrow may be immediately next to the hole it points to, or all the way across the grid from it. Not every hole will have an arrow pointing to it.

Example

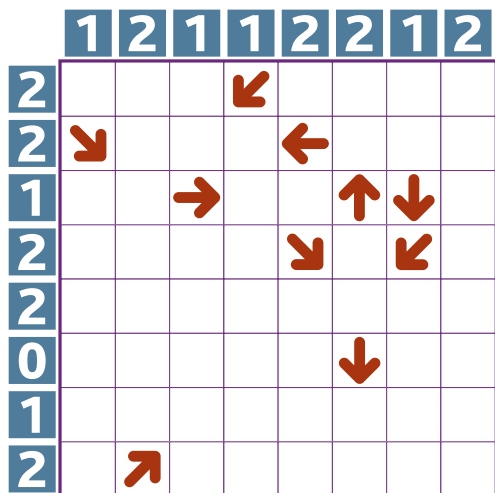


Solution

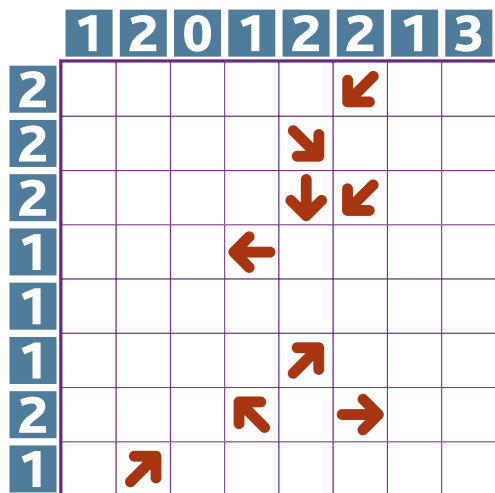


ANSWER ON PAGE 184

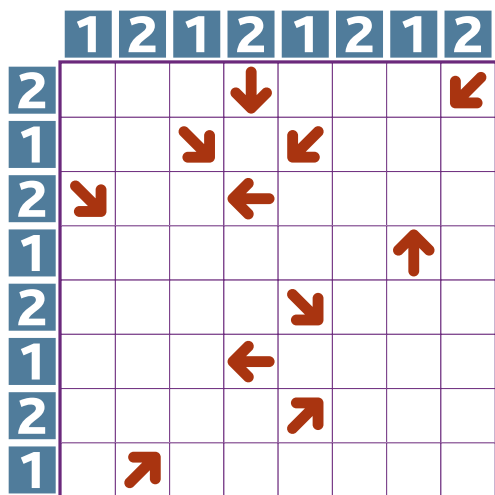
1



2



3



4

